

International Relations and Natural Sciences – Unusual but promising companions?

Jana Pavlic

Joint Head of Government and EU Relations

University of Ljubljana, 30 March 2018



Co-funded by the
Erasmus+ Programme
of the European Union

EMBL







I have 5 goals for today's seminar

- Highlight the **European Research Infrastructures** and the position and role of **EMBL**
- Show how **international relations professionals** can help such organizations fulfil their missions
- Present my own day-to-day **activities** and **challenges**
- Outline the **current** and **future opportunities** in **existing** and **new** international Research Infrastructures

Infrastructures



European Research Infrastructures



EIROforum: 8 Large European Research Infrastructures with 9000 employees and €7.4 billion annual budget

- Excellence science
- Cutting-edge services in natural sciences
- Intergovernmental
- Sound governance
- Sustainable funding



EIROforum: 8 Large European Research Infrastructures with 9000 employees and €7.4 billion annual budget

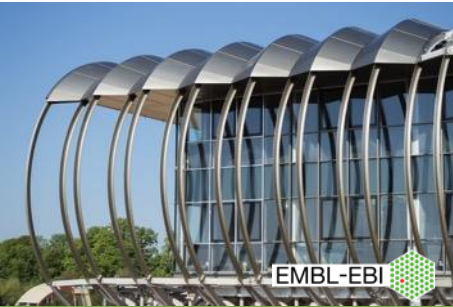
- Excellence science
- Cutting-edge services in natural sciences
- Intergovernmental
- Sound governance
- Sustainable funding





EMBL Sites

Hinxton



Bioinformatics

Grenoble (ESRF)



Structural Biology

Barcelona



Tissue Biology & Disease Modeling

Hamburg (DESY)



Structural Biology

Heidelberg

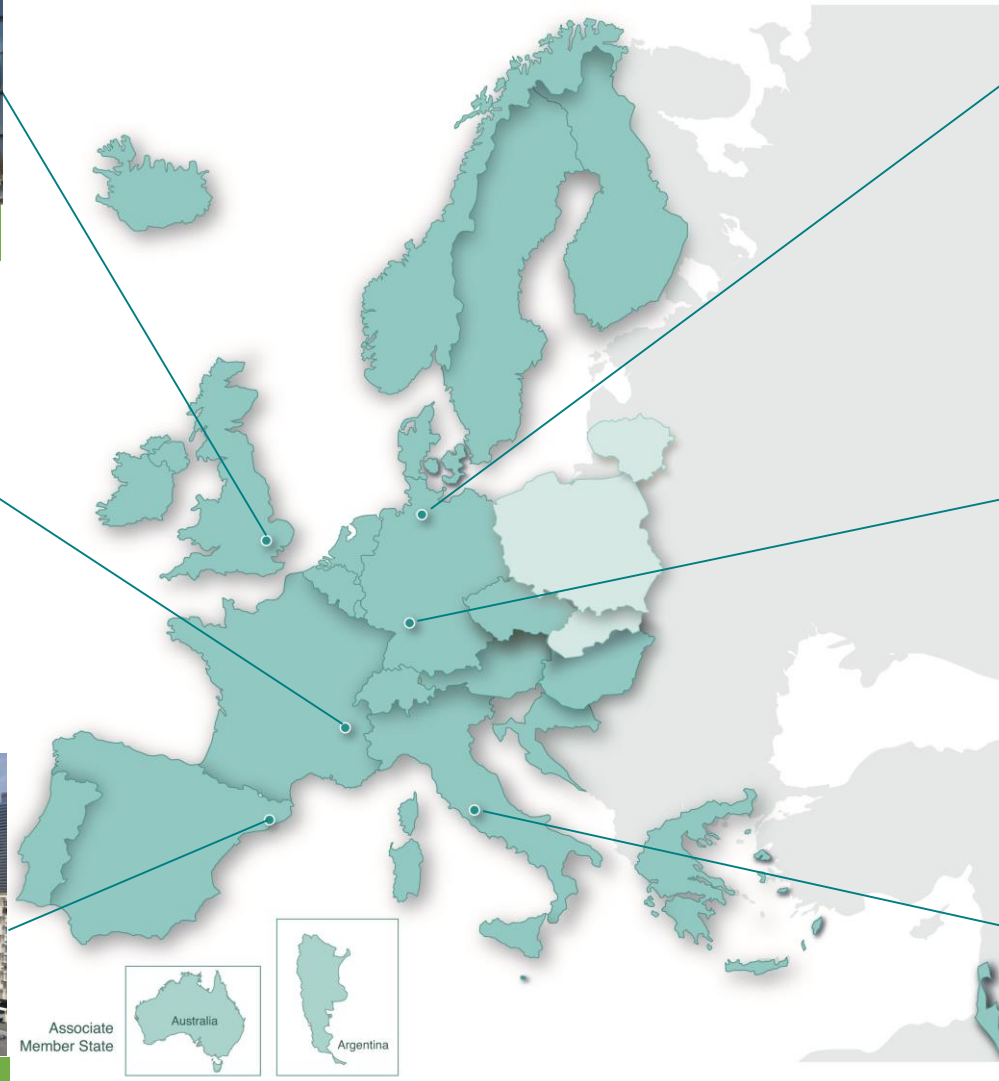


Life Sciences

Rome



Epigenetics & Neurobiology



> 1600 people > 80 nationalities



EMBL was established in 1973 by an agreement signed by 10 European countries

- (Article I) “A European Molecular Biology Laboratory is hereby established as an intergovernmental organisation”
- (Article II) “The Laboratory shall promote co-operation among European States in fundamental research, in the development of advanced instrumentation and in advanced teaching in molecular biology .../.../ ... and shall concentrate its activities on work not normally or easily carried out in national institutions. /.../ “

EMBL – 10 founding Member States

Austria 1974

Denmark 1974

France 1974

Germany 1974

Israel 1974

Italy 1974

Netherlands 1974

Sweden 1974

Switzerland 1974

United Kingdom 1974

EMBL – 24 Member States

Member States 24 + 2

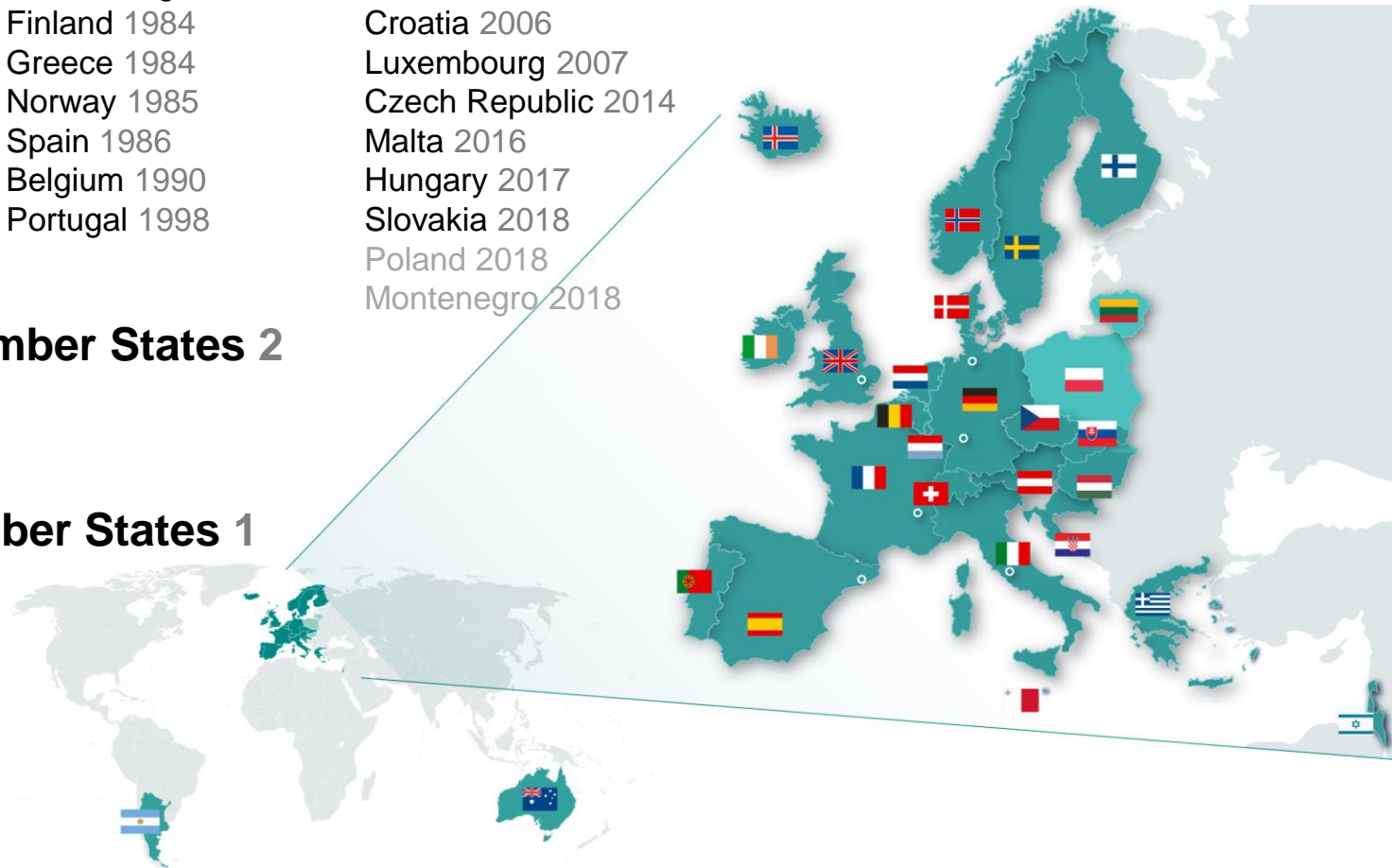
Austria 1974	Switzerland 1974	Ireland 2003
Denmark 1974	United Kingdom 1974	Iceland 2005
France 1974	Finland 1984	Croatia 2006
Germany 1974	Greece 1984	Luxembourg 2007
Israel 1974	Norway 1985	Czech Republic 2014
Italy 1974	Spain 1986	Malta 2016
Netherlands 1974	Belgium 1990	Hungary 2017
Sweden 1974	Portugal 1998	Slovakia 2018
		Poland 2018
		Montenegro 2018

Associate Member States 2

Australia 2008
Argentina 2014

Prospect Member States 1

Lithuania 2015



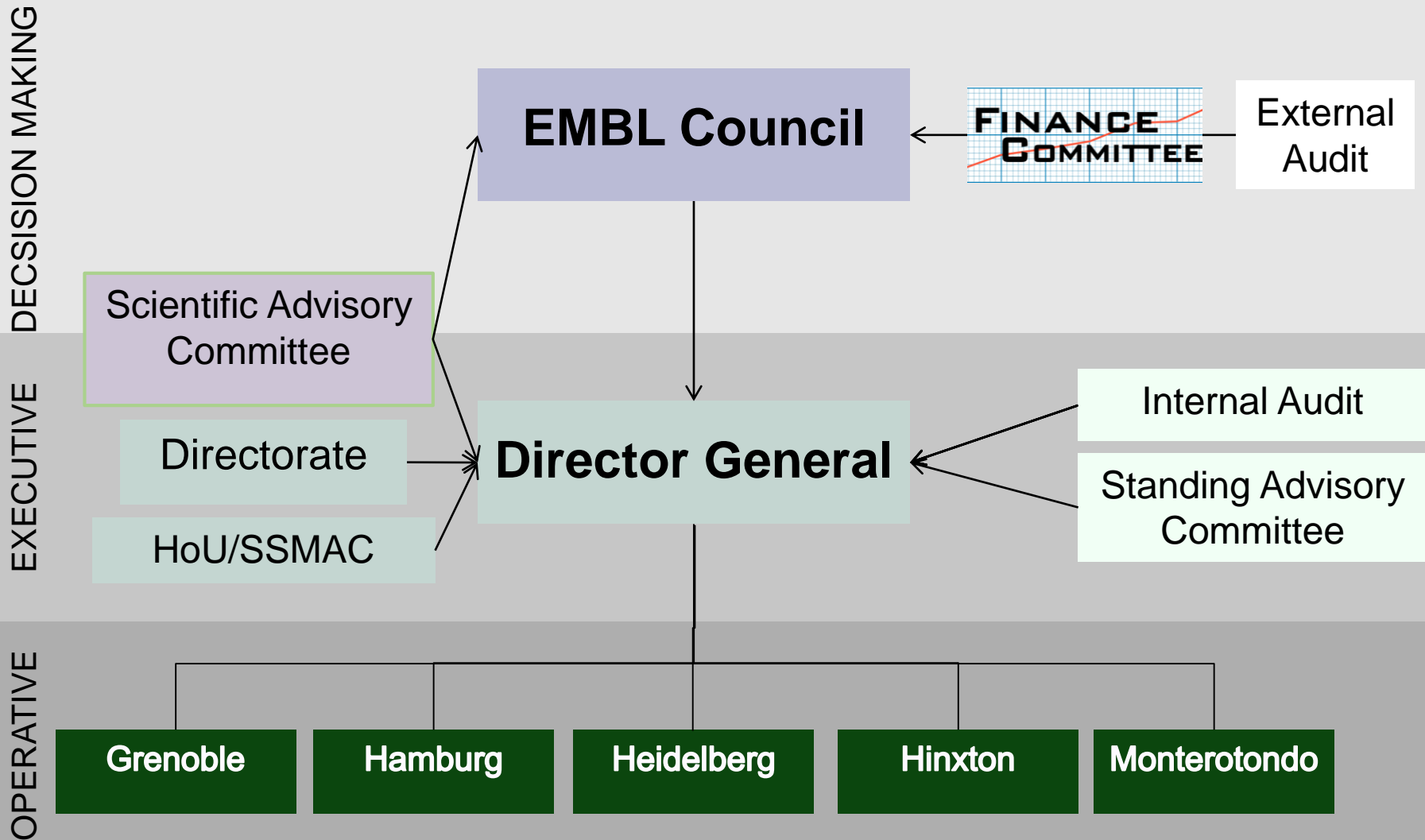
Organisational Principles: The EMBL Model

- 'Hire the best'
 - focus on young scientists
- Stringent quality control
 - Scientific Advisory Committee
- Adaptability & flexibility
 - international (> 80 nationalities)
 - continuous turnover
- Financial, intellectual and technical support
 - mentoring
 - creativity & scientific freedom
 - open & collaborative culture
 - non-bureaucratic & efficient processes/systems
 - focus on research, few other tasks (e.g. teaching)

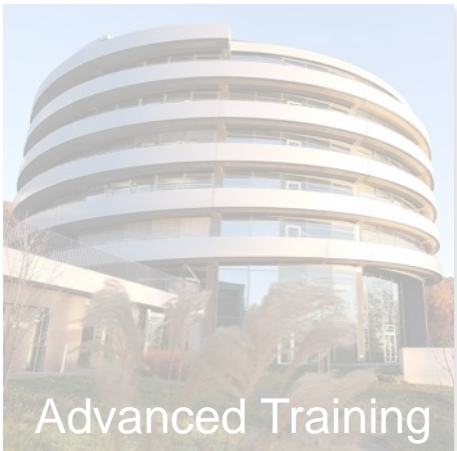
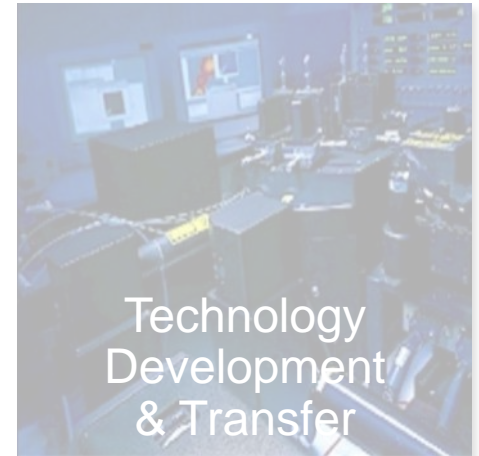
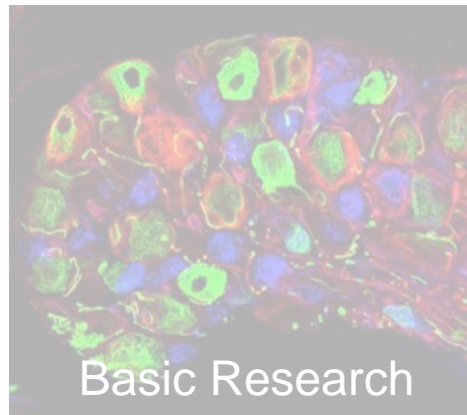


EMBL's organisational structure serves as a model for other research institutions

EMBL Governance



Five missions of EMBL



International Relations at EMBL



Director International Relations



Joint Heads of Government and EU Relations



Portfolio: Policy and Strategy

- Advising in political & policy matters to:
 - Director International Relations
 - Director General
- Shaping and implementing the international relations strategy of EMBL at a political and science policy level;
- **An example:** Development of key EMBL policies and their endorsement by the EMBL Council

Portfolio: Member States Relations

- Facilitating cooperation with Member States, by interacting with governments and national research organizations
- Shaping and implementing new strategies for engagement with potential new Member States
- Develops, oversees and implements the EMBL's Partnership Programme
- **An example:** Development of Prospect Membership Policy and accession talks with Hungary

Portfolio: EC and EIROforum Relations

- Coordinates EMBL's relations with the EC and other EU institutions
- Represents EMBL in EIROforum
- **Example 1:** Dialogue with the EC – from a grant beneficiary to a policy influencer
- **Example 2:** Chairing EIROforum Coordination Group

And the challenges? ...yes, there are a few!



And the challenges? ...yes, there are a few!

- Scientific vision and aspiration vs. political reality
- No “juste retour” – only “reign of scientific excellence”
- Accommodating scientific communities from new Member States and linking them to researchers within EMBL
- Dialogue with researchers...
 - they need to understand WHY Member States matter,
 - we need to understand WHY their science matter!

Current and future developments in EU and global research infrastructures



ESFRI

European Strategy Forum on RIs



- **WHAT IS IT:** supports a coherent and strategic approach to policy making on RIs in Europe
- Identifies new projects or upgrades of RIs according to the needs of the research communities in the next 10-20 years
- **WHO IS IN IT?** EU Member States reps and countries associated to the Research FP with close involvement of EC
- **TODAY: 50 ESFRI projects and landmarks – i.e. newly initiated RIs spanning European membership and ALL sciences!**
- →process reflected on national level with preparing national RIs roadmaps



ERIC legal status

CERIC



ERIC – a new legal animal

- A legal entity set up under EU-law (*Article 187 TFEU; EC Regulation 723/2009*) to establish and operate a Research Infrastructure on a non-economic basis
- Members and observers can only be countries or intergovernmental organisations, minimal 3 EU-Member States required
- Legal personality recognized in all EU Member States
- Some privileges / exemptions allowed at a national level for intergovernmental organisations (e.g. VAT, but no income tax)
- No ratification process necessary

17 ERICs Established

								<i>EPOS</i>
								<i>ELI</i>
		ECRIN	JIV				INSTRUCT	<i>INFRA FRONTIER</i>
		BBMRI	DARIAH				ECCSEL	<i>Euro-Bio Imaging</i>
		ESS Social	CERIC	ICOS			CESSDA	<i>EU-OPEN SCREEN</i>
SHARE	CLARIN	EATRIS	EURO ARGO	ESS Neutron	EMSO	LIFE WATCH		EMBRC
2011	2012	2013	2014	2015	2016	2017	2018+	

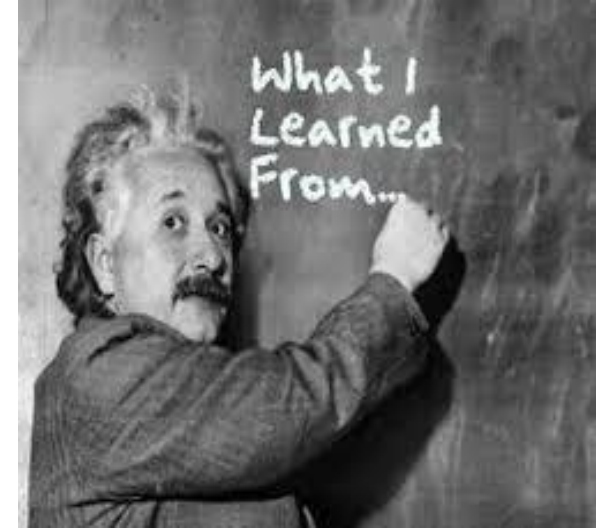


ERIC legal status



Key take-home messages

- International relations are spanning sciences → a relatively new occurrence, in particular in Research Infrastructures;
- Interest of the EC to be involved in Research Infrastructures establishment and policy making is growing → science and EU affairs are getting interlinked too
- **Do explore the world of international relations beyond the “historical” IGOs!**



Thank you!